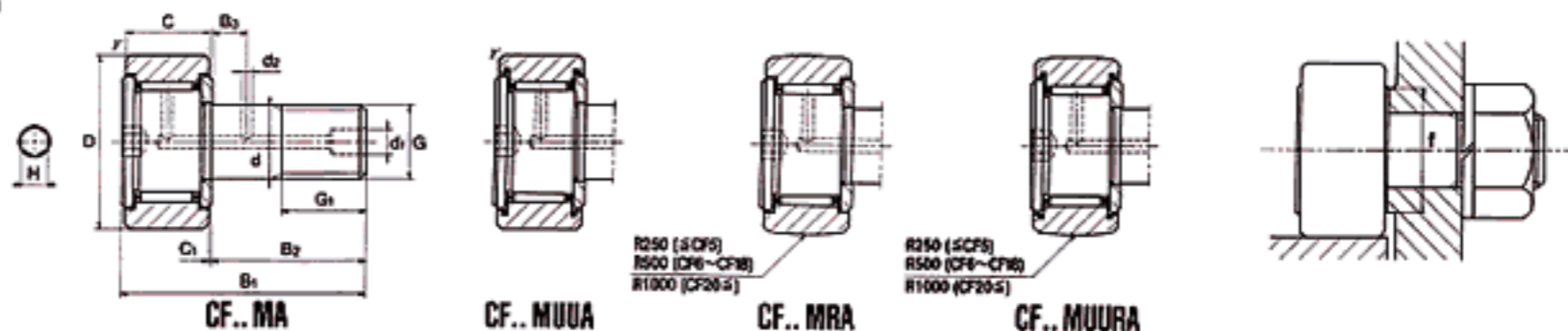


CAM FOLLOWERS STAINLESS STEEL

HEXAGON SOCKET ON THE STUD HEAD



JNS:CF..MA TYPE

Stud diameter mm	Dimensions (mm)																Max tightening torque N·m	Basic dynamic load rating Cr N	Basic static load rating Cor N	Largest permissible load N	Track load capacity N	Limiting speed rpm	Designation				Weight g
	D	C	d	Thread										Cylindrical outer ring		Crowned outer ring											
				G	G ₁	B ₁	B ₂	B ₃	C ₁	d ₁	d ₂	H	f _{3 min}	f	Without seals	With seals							Without seals	With seals			
3	10	7	3	M3X0.5	5	17	9	—	0.5	— ¹⁾	—	1.5	0.2	6.8	0.4	1470	1180	360	1370 540	47000	CF 3MA	CF 3MUUA	CF 3MRA	CF 3MUURA	4.5		
4	12	8	4	M4X0.7	6	20	11	—	0.5	— ¹⁾	—	2	0.3	8.6	1	2060	2050	780	1760 690	37000	CF 4MA	CF 4MUUA	CF 4MRA	CF 4MUURA	7.5		
5	13	9	5	M5X0.8	7.5	23	13	—	0.5	— ¹⁾	—	2.5	0.3	9.7	2	3140	2770	1420	2250 780	29000	CF 5MA	CF 5MUUA	CF 5MRA	CF 5MUURA	10.5		
6	16	11	6	M6X1	8	28	16	—	0.6	— ¹⁾	—	3	0.3	11	3	3630	3630	2110	3430 1080	25000	CF 6MA	CF 6MUUA	CF 6MRA	CF 6MUURA	18.5		
8	19	11	8	M8X1.25	10	32	20	—	0.6	— ¹⁾	—	4	0.3	13	8	4310	4710	4710	4020 1370	20000	CF 8MA	CF 8MUUA	CF 8MRA	CF 8MUURA	28.5		
10	22	12	10	M10X1.25	12	36	23	—	0.6	— ¹⁾	—	5	0.3	15	15	5390	6880	6880	4700 1670	17000	CF10MA	CF10MUUA	CF10MRA	CF10MUURA	45		
	26	12	10	M10X1.25 M10X1.0 ⁴⁾	12	36	23	—	0.6	— ¹⁾	—	5	0.3	15	15	5390	6880	6880	5490 2060	17000	CF10-1MA	CF10-1MUUA	CF10-1MRA	CF10-1MUURA	60		
12	30	14	12	M12X1.5	13	40	25	6	0.6	6	3	6	0.6	20	22	7940	9800	9800	7060 2450	14000	CF12MA	CF12MUUA	CF12MRA	CF12MUURA	95		
	32	14	12	M12X1.5	13	40	25	6	0.6	6	3	6	0.6	20	22	7940	9800	9800	7450 2740	14000	CF12-1MA	CF12-1MUUA	CF12-1MRA	CF12-1MUURA	105		
16	35	18	16	M16X1.5	17	52	32.5	8	0.8	6	3	6	0.6	24	58	12050	18330	18330	11200 3140	10000	CF16MA	CF16MUUA	CF16MRA	CF16MUURA	170		
18	40	20	18	M18X1.5	19	58	36.5	8	0.8	6	3	6	1	26	87	14700	25200	25200	14400 3720	8500	CF18MA	CF18MUUA	CF18MRA	CF18MUURA	250		
20	52	24	20	M20X1.5	21	66	40.5	9	0.8	8	4	8	1	36	120	20680	34600	32140	23200 8230	7000	CF20MA	CF20MUUA	CF20MRA	CF20MUURA	460		
	47	24	20	M20X1.5	21	66	40.5	9	0.8	8	4	8	1	36	120	20680	34600	32140	21000 7150	7000	CF20-1MA	CF20-1MUUA	CF20-1MRA	CF20-1MUURA	385		
24	62	29	24	M24X1.5	25	80	49.5	11	0.8	8	4	8	1	40	220	30480	52630	49500	34200 10500	6500	CF24MA	CF24MUUA	CF24MRA	CF24MUURA	815		
	72	29	24	M24X1.5	25	80	49.5	11	0.8	8	4	8	1	40	220	30480	52630	49500	39800 12900	6500	CF24-1MA	CF24-1MUUA	CF24-1MRA	CF24-1MUURA	1140		
30	80	35	30	M30X1.5	32	100	63	15	1	8	4	8	1	46	450	45370	85060	73700	52600 14900	5000	CF30MA	CF30MUUA	CF30MRA	CF30MUURA	1870		
	85	35	30	M30X1.5	32	100	63	15	1	8	4	8	1	46	450	45370	85060	73700	56000 16100	5000	CF30-1MA	CF30-1MUUA	CF30-1MRA	CF30-1MUURA	2030		
	90	35	30	M30X1.5	32	100	63	15	1	8	4	8	1	46	450	45370	85060	73700	59300 17300	5000	CF30-2MA	CF30-2MUUA	CF30-2MRA	CF30-2MUURA	2220		

● Also cam followers with full roller "CF..VMA" type available.

● This type cannot do grease refilling from hexagon socket.

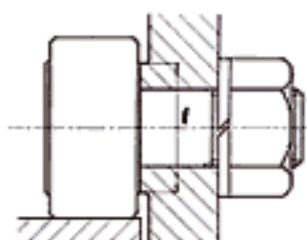
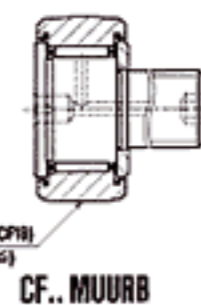
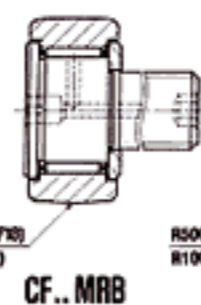
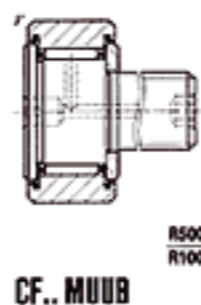
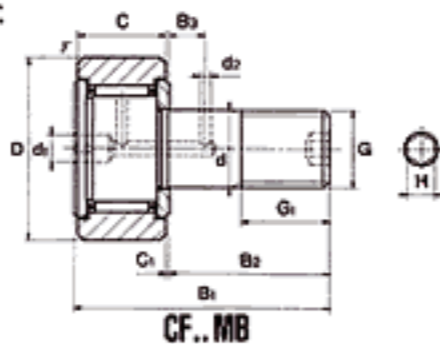
1) Smallest permissible chamfer dimension.

2) Without seals, suitable for grease lubrication. In case of oil lubrication, up to 130% of this value shall be permissible, and 70% of this value shall apply for types with seals.

3) No grease refilling hole is provided. 4) Add "K" to the code number end.

CAM FOLLOWERS STAINLESS STEEL

HEXAGON SOCKET ON THE STUD THREAD SIDE



JNS:CF..MB TYPE

Stud diameter mm	Dimensions (mm)														Max tightening torque N·m	Basic dynamic load rating Cr N	Basic static load rating Cor N	Largest permissible load N	Track load capacity N	Limiting speed rpm ²⁾	Designation				Weight g
	D	C	d	Thread ¹⁾																	Cylindrical outer ring		Crowned outer ring		
				G	G ₁	B ₁	B ₂	B ₃	C ₁	d ₁	d ₂	H	f _{3 min}	f							Without seals	With seals	Without seals	With seals	
12	30	14	12	M12X1.5	13	40	25	6	0.6	6	3	6	0.6	20	22	7 940	9 800	9 800	7 060 2 450	14 000	CF12MB	CF12MUUB	CF12MRB	CF12MUORB	95
	32	14	12	M12X1.5	13	40	25	6	0.6	6	3	6	0.6	20	22	7 940	9 800	9 800	7 450 2 740	14 000	CF12-1MB	CF12-1MUUB	CF12-1MRB	CF12-1MUORB	105
16	35	18	16	M16X1.5	17	52	32.5	8	0.8	6	3	6	0.6	24	58	12 050	18 330	18 330	11 200 3 140	11 000	CF16MB	CF16MUUB	CF16MRB	CF16MUORB	170
18	40	20	18	M18X1.5	19	66	40.5	8	0.8	6	3	6	1	26	87	14 700	25 200	25 200	14 400 3 720	8 500	CF18MB	CF18MUUB	CF18MRB	CF18MUORB	250
20	52	24	20	M20X1.5	21	66	40.5	9	0.8	8	4	8	1	36	120	20 680	34 600	32 140	23 200 8 230	7 000	CF20MB	CF20MUUB	CF20MRB	CF20MUORB	460
	47	24	20	M20X1.5	21	66	40.5	9	0.8	8	4	8	1	36	120	20 680	34 600	32 140	21 000 7 150	7 000	CF20-1MB	CF20-1MUUB	CF20-1MRB	CF20-1MUORB	385
24	62	29	24	M24X1.5	25	80	49.5	11	0.8	8	4	8	1	40	220	30 480	52 630	49 500	34 200 10 500	6 500	CF24MB	CF24MUUB	CF24MRB	CF24MUORB	815
	72	29	24	M24X1.5	25	80	49.5	11	0.8	8	4	8	1	40	220	30 480	52 630	49 500	39 800 12 900	6 500	CF24-1MB	CF24-1MUUB	CF24-1MRB	CF24-1MUORB	1 140
30	80	35	30	M30X1.5	32	100	63	15	1	8	4	8	1	46	450	45 370	85 060	73 700	52 600 14 900	5 000	CF30MB	CF30MUUB	CF30MRB	CF30MUORB	1 870
	85	35	30	M30X1.5	32	100	63	15	1	8	4	8	1	46	450	45 370	85 060	73 700	56 000 16 100	5 000	CF30-1MB	CF30-1MUUB	CF30-1MRB	CF30-1MUORB	2 030
	90	35	30	M30X1.5	32	100	63	15	1	8	4	8	1	46	450	45 370	85 060	73 700	59 300 17 300	5 000	CF30-2MB	CF30-2MUUB	CF30-2MRB	CF30-2MUORB	2 220

● Also cam followers with full roller "CF..VMB" type available.

● This type cannot do grease refilling from hexagon socket.

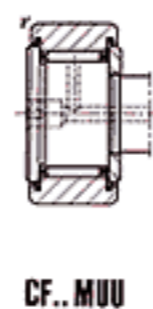
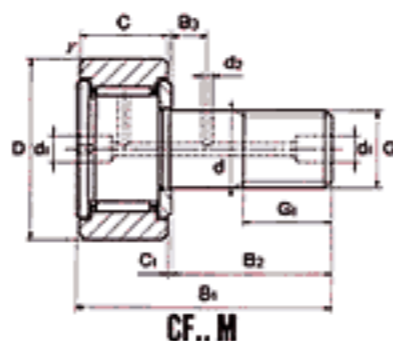
1) Smallest permissible chamfer dimension.

2) Without seals, suitable for grease lubrication. In case of oil lubrication, up to 130% of this value shall be permissible, and 70% of this value shall apply for types with seals.

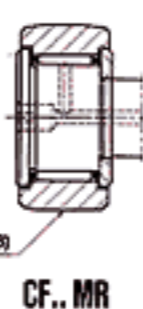
CF MB

CF MB

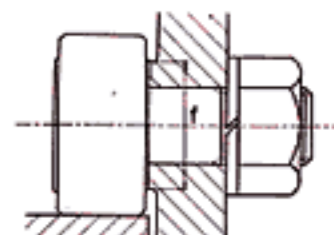
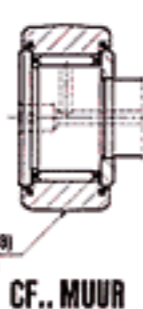
CAM FOLLOWERS STAINLESS STEEL STANDARD



R250 (CF5)
R500 (CF6~CF18)
R1000 (CF20~)



R250 (CF5)
R500 (CF6~CF18)
R1000 (CF20~)



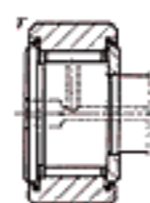
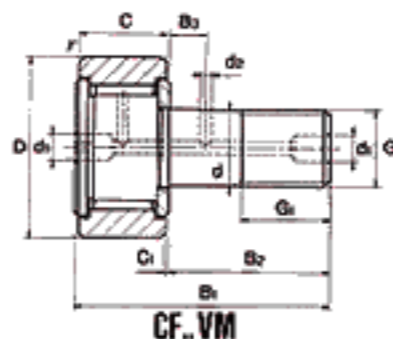
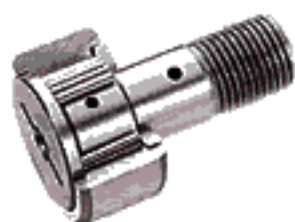
JNS:CF..M TYPE

Stud diameter mm	Dimensions (mm)													Max tightening torque N·m	Basic dynamic load rating Cr N	Basic static load rating Cor N	Largest permissible load N	Track load capacity N	Limiting speed rpm ²⁾	Designation				Weight g
	D	C	d	Thread																Cylindrical outer ring		Crowned outer ring		
				G	G ₁	B ₁	B ₂	B ₃	C ₁	d ₁	d ₂	f _{3 min}	f							Without seals	With seals	Without seals	With seals	
5	13	9	5	M5×0.8	7.5	23	13	—	0.5	³ / ₄ 3.1	—	0.3	9.7	2	3 140	2 770	1 420	2 250 780	29 000	CF 5M	CF 5MUU	CF 5MR	CF 5MUUR	10.5
	6	11	6	M6×1	8	28	16	—	0.6	³ / ₄ 4	—	0.3	11	3	3 630	3 630	2 110	3 430 1 080	25 000	CF 6M	CF 6MUU	CF 6MR	CF 6MUUR	18.5
8	19	11	8	M8×1.25	10	32	20	—	0.6	³ / ₄ 4	—	0.3	13	8	4 310	4 710	4 710	4 020 1 370	20 000	CF 8M	CF 8MUU	CF 8MR	CF 8MUUR	28.5
	10	22	12	10	M10×1.25 M10×1.0 ⁴⁾	12	36	23	—	0.6	³ / ₄ 4	—	0.3	15	15	5 390	6 860	6 860	4 700 1 670	17 000	CF10M	CF10MUU	CF10MR	CF10MUUR
26		12	10	M10×1.25 M10×1.0 ⁴⁾	12	36	23	—	0.6	³ / ₄ 4	—	0.3	15	15	5 390	6 860	6 860	5 490 2 060	17 000	CF10-1M	CF10-1MUU	CF10-1MR	CF10-1MUUR	60
12	30	14	12	M12×1.5	13	40	25	6	0.6	³ / ₄ 6	3	0.6	20	22	7 940	9 800	9 800	7 060 2 450	14 000	CF12M	CF12MUU	CF12MR	CF12MUUR	95
	32	14	12	M12×1.5	13	40	25	6	0.6	³ / ₄ 6	3	0.6	20	22	7 940	9 800	9 800	7 450 2 740	14 000	CF12-1M	CF12-1MUU	CF12-1MR	CF12-1MUUR	105
16	35	18	16	M16×1.5	17	52	32.5	8	0.8	³ / ₄ 6	3	0.6	24	58	12 050	18 330	18 330	11 200 3 140	10 000	CF16M	CF16MUU	CF16MR	CF16MUUR	170
	40	20	18	M18×1.5	19	58	36.5	8	0.8	³ / ₄ 6	3	1	26	87	14 700	25 200	25 200	14 400 3 720	8 500	CF18M	CF18MUU	CF18MR	CF18MUUR	250
20	52	24	20	M20×1.5	21	66	40.5	9	0.8	³ / ₄ 8	4	1	36	120	20 680	34 600	32 140	23 200 8 230	7 000	CF20M	CF20MUU	CF20MR	CF20MUUR	460
	47	24	20	M20×1.5	21	66	40.5	9	0.8	³ / ₄ 8	4	1	36	120	20 680	34 600	32 140	21 000 7 150	7 000	CF20-1M	CF20-1MUU	CF20-1MR	CF20-1MUUR	385
24	62	29	24	M24×1.5	25	80	49.5	11	0.8	³ / ₄ 8	4	1	40	220	30 480	52 630	49 500	34 200 10 500	6 500	CF24M	CF24MUU	CF24MR	CF24MUUR	815
	72	29	24	M24×1.5	25	80	49.5	11	0.8	³ / ₄ 8	4	1	40	220	30 480	52 630	49 500	39 800 12 900	6 500	CF24-1M	CF24-1MUU	CF24-1MR	CF24-1MUUR	1 140
30	80	35	30	M30×1.5	32	100	63	15	1	³ / ₄ 8	4	1	46	450	45 370	85 060	73 700	52 600 14 900	5 000	CF30M	CF30MUU	CF30MR	CF30MUUR	1 870
	85	35	30	M30×1.5	32	100	63	15	1	³ / ₄ 8	4	1	46	450	45 370	85 060	73 700	56 000 16 100	5 000	CF30-1M	CF30-1MUU	CF30-1MR	CF30-1MUUR	2 030
	90	35	30	M30×1.5	32	100	63	15	1	³ / ₄ 8	4	1	46	450	45 370	85 060	73 700	59 300 17 300	5 000	CF30-2M	CF30-2MUU	CF30-2MR	CF30-2MUUR	2 220

1) Smallest permissible chamfer dimension.
 2) Without seals, suitable for grease lubrication. In case of oil lubrication, up to 130% of this value shall be permissible, and 70% of this value shall apply for types with seals.
 3) The grease refilling hole is machined only for the head.
 4) Add "K" to the code number end.

CAM FOLLOWERS STAINLESS STEEL

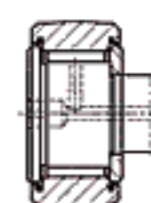
FULL ROLLER STANDARD



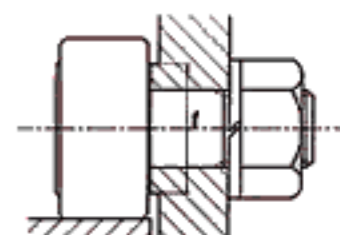
CF..VMUU



CF..VMR



CF..VMUUR



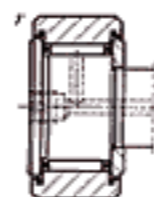
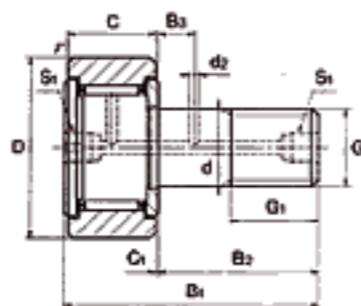
JNS:CF..VM TYPE

Stud diameter mm	Dimensions (mm)													Max tightening torque N·m	Basic dynamic load rating Cr N	Basic static load rating Cor N	Largest permissible load N	Track load capacity N	Limiting speed rpm	Designation				Weight g
	D	C	d	Thread																Cylindrical outer ring		Crowned outer ring		
				G	G ₁	B ₁	B ₂	B ₃	C ₁	d ₁	d ₂	f	Without seals							With seals	Without seals	With seals		
6	16	11	6	M6X1	8	28	16	—	0.6	³⁾⁴	—	0.3	11	3	6960	8530	2110	3430 1080	12000	CF 6VM	CF 6VMUU	CF 6VMR	CF 6VMUUR	18.5
				G	G ₁	B ₁	B ₂	B ₃	C ₁	d ₁	d ₂	f	Without seals							With seals	Without seals	With seals		
8	19	11	8	M8X1.25	10	32	20	—	0.6	³⁾⁴	—	0.3	13	8	8130	11170	4710	4020 1370	9000	CF 8VM	CF 8VMUU	CF 8VMR	CF 8VMUUR	28.5
				G	G ₁	B ₁	B ₂	B ₃	C ₁	d ₁	d ₂	f	Without seals							With seals	Without seals	With seals		
10	22	12	10	M10X1.25	12	36	23	—	0.6	³⁾⁴	—	0.3	15	15	9510	14500	7450	4700 1670	7500	CF10VM	CF10VMUU	CF10VMR	CF10VMUUR	45
				M10X1.0 ⁴⁾	12	36	23	—	0.6	³⁾⁴	—	0.3	15							Without seals	With seals	Without seals	With seals	
12	30	14	12	M12X1.5	13	40	25	6	0.6	6	3	0.6	20	22	13430	19700	11270	7060 2450	6000	CF12VM	CF12VMUU	CF12VMR	CF12VMUUR	95
				M12X1.0 ⁴⁾	13	40	25	6	0.6	6	3	0.6	20							Without seals	With seals	Without seals	With seals	
16	35	18	16	M16X1.5	17	52	32.5	8	0.8	6	3	0.6	24	58	20680	37630	19800	11200 3140	4500	CF16VM	CF16VMUU	CF16VMR	CF16VMUUR	170
				M16X1.0 ⁴⁾	17	52	32.5	8	0.8	6	3	0.6	24							Without seals	With seals	Without seals	With seals	
18	40	20	18	M18X1.5	19	58	36.5	8	0.8	6	3	1	26	87	25280	51350	26560	14400 3720	3500	CF18VM	CF18VMUU	CF18VMR	CF18VMUUR	250
				M18X1.0 ⁴⁾	19	58	36.5	8	0.8	6	3	1	26							Without seals	With seals	Without seals	With seals	
20	52	24	20	M20X1.5	21	66	40.5	9	0.8	8	4	1	36	120	33120	64480	32140	23200 8230	3500	CF20VM	CF20VMUU	CF20VMR	CF20VMUUR	460
				M20X1.0 ⁴⁾	21	66	40.5	9	0.8	8	4	1	36							Without seals	With seals	Without seals	With seals	
24	62	29	24	M24X1.5	25	80	49.5	11	0.8	8	4	1	40	220	46550	92020	49500	34200 10500	3000	CF24VM	CF24VMUU	CF24VMR	CF24VMUUR	815
				M24X1.0 ⁴⁾	25	80	49.5	11	0.8	8	4	1	40							Without seals	With seals	Without seals	With seals	
30	80	35	30	M30X1.5	32	100	63	15	1	8	4	1	46	450	67620	144060	73700	52600 14900	2200	CF30VM	CF30VMUU	CF30VMR	CF30VMUUR	1870
				M30X1.0 ⁴⁾	32	100	63	15	1	8	4	1	46							Without seals	With seals	Without seals	With seals	
				M30X0.8 ⁴⁾	32	100	63	15	1	8	4	1	46							Without seals	With seals	Without seals	With seals	
30	85	35	30	M30X1.5	32	100	63	15	1	8	4	1	46	450	67620	144060	73700	56000 16100	2200	CF30-1VM	CF30-1VMUU	CF30-1VMR	CF30-1VMUUR	2030
				M30X1.0 ⁴⁾	32	100	63	15	1	8	4	1	46							Without seals	With seals	Without seals	With seals	
30	90	35	30	M30X1.5	32	100	63	15	1	8	4	1	46	450	67620	144060	73700	59300 17300	2200	CF30-2VM	CF30-2VMUU	CF30-2VMR	CF30-2VMUUR	2220
				M30X1.0 ⁴⁾	32	100	63	15	1	8	4	1	46							Without seals	With seals	Without seals	With seals	

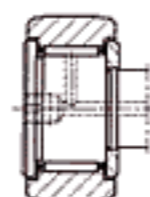
1) Smallest permissible chamfer dimension.
 2) Without seals, suitable for grease lubrication. In case of oil lubrication, up to 130% of this value shall be permissible, and 70% of this value shall apply for types with seals.
 3) The grease refilling hole is machined only for the head.
 4) Add "K" to the code number end.

CAM FOLLOWERS STAINLESS STEEL

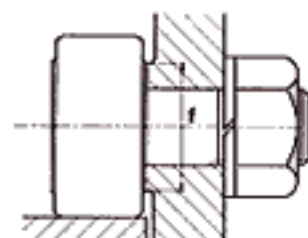
WITH TAP HOLES FOR PIPING



R500 (CF6~CF18)
R1000 (CF20~)



R500 (CF6~CF18)
R1000 (CF20~)



JNS:CFT..M TYPE

CFT..M

CFT..MUU

CFT..MR

CFT..MUUR

Stud diameter mm	Dimensions (mm)														Max tightening torque N·m	Basic dynamic load rating Cr N	Basic static load rating Cor N	Largest permissible load N	Track load capacity N	Limiting speed rpm	Designation				Weight g
	D	C	d	Thread										Cylindrical outer ring							Crowned outer ring				
				G	G ₁	B ₁	B ₂	B ₃	C ₁	S ₁	d ₂	f _{min}	f	Without seals							With seals	Without seals	With seals		
6	16	11	6	M6X1	8	28	16	—	0.6	³⁾ M6X0.75	—	0.3	11	3	3630	3630	2110	3430 1080	25000	CFT 6M	CFT 6MUU	CFT 6MR	CFT 6MUUR	18.5	
	8	19	11	8	M8X1.25	10	32	20	—	0.6	³⁾ M6X0.75	—	0.3	13	8	4310	4710	4710	4020 1370	20000	CFT 8M	CFT 8MUU	CFT 8MR		CFT 8MUUR
10	22	12	10	M10X1.25 M10X1.0 ⁴⁾	12	36	23	—	0.6	³⁾ M6X0.75	—	0.3	15	15	5390	6860	6860	4700 1670	17000	CFT10M	CFT10MUU	CFT10MR	CFT10MUUR	45	
	26	12	10	M10X1.25 M10X1.0 ⁴⁾	12	36	23	—	0.6	³⁾ M6X0.75	—	0.3	15	15	5390	6860	6860	5490 2060	17000	CFT10-1M	CFT10-1MUU	CFT10-1MR	CFT10-1MUUR		60
12	30	14	12	M12X1.5	13	40	25	6	0.6	M6X0.75	3	0.6	20	22	7940	9800	9800	7060 2450	14000	CFT12M	CFT12MUU	CFT12MR	CFT12MUUR	95	
	32	14	12	M12X1.5	13	40	25	6	0.6	M6X0.75	3	0.6	20	22	7940	9800	9800	7450 2740	14000	CFT12-1M	CFT12-1MUU	CFT12-1MR	CFT12-1MUUR		105
16	35	18	16	M16X1.5	17	52	32.5	8	0.8	Rc1/8	3	0.6	24	58	12050	18330	18330	11200 3140	10000	CFT16M	CFT16MUU	CFT16MR	CFT16MUUR	170	
18	40	20	18	M18X1.5	19	58	36.5	8	0.8	Rc1/8	3	1	26	87	14700	25200	25200	14400 3720	8500	CFT18M	CFT18MUU	CFT18MR	CFT18MUUR	250	
20	52	24	20	M20X1.5	21	66	40.5	9	0.8	Rc1/8	4	1	36	120	20680	34600	32140	23200 8230	7000	CFT20M	CFT20MUU	CFT20MR	CF20MUUR	460	
	47	24	20	M20X1.5	21	66	40.5	9	0.8	Rc1/8	4	1	36	120	20680	34600	32140	21000 7150	7000	CFT20-1M	CFT20-1MUU	CFT20-1MR	CFT20-1MUUR		385
24	62	29	24	M24X1.5	25	80	49.5	11	0.8	Rc1/8	4	1	40	220	30480	52630	49500	34200 10500	6500	CFT24M	CFT24MUU	CFT24MR	CFT24MUUR	815	
	72	29	24	M24X1.5	25	80	49.5	11	0.8	Rc1/8	4	1	40	220	30480	52630	49500	39800 12900	6500	CFT24-1M	CFT24-1MUU	CFT24-1MR	CFT24-1MUUR		1140
30	80	35	30	M30X1.5	32	100	63	15	1	Rc1/8	4	1	46	450	45370	85060	73700	52600 14900	5000	CFT30M	CFT30MUU	CFT30MR	CFT30MUUR	1870	
	85	35	30	M30X1.5	32	100	63	15	1	Rc1/8	4	1	46	450	45370	85060	73700	56000 16100	5000	CFT30-1M	CFT30-1MUU	CFT30-1MR	CFT30-1MUUR		2030
	90	35	30	M30X1.5	32	100	63	15	1	Rc1/8	4	1	46	450	45370	85060	73700	59300 17300	5000	CFT30-2M	CFT30-2MUU	CFT30-2MR	CFT30-2MUUR		

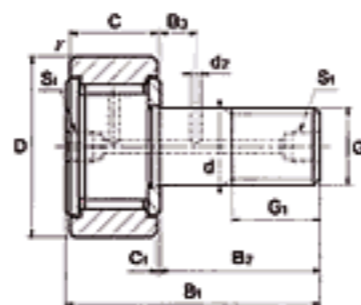
● Also hexagon socket with piping tap "CFT.. MA" type or "CFT.. MB" type available.
 ● Also solid eccentric with piping tap "CFHT.. M" type and "CFHT.. MA", "CFHT.. MB" available.
 1) Smallest permissible chamfer dimension.
 2) Without seals, suitable for grease lubrication. In case of oil lubrication, up to 130% of this value shall be permissible, and 70% of this value shall apply for types with seals.
 3) The grease refilling hole is machined only for the head. 4) Add "K" to the code number end.

CFT
M

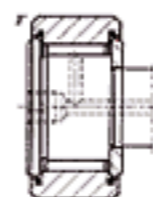
CFT
M

CAM FOLLOWERS STAINLESS STEEL

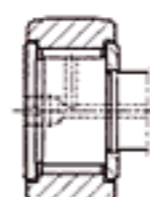
FULL ROLLER WITH TAP HOLES FOR PIPING



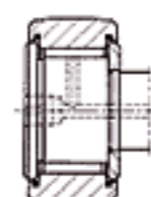
CFT..VM



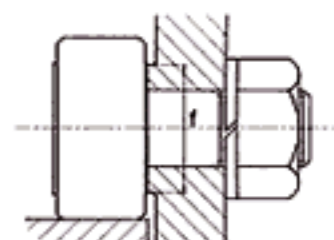
CFT..VMUU



CFT..VMR



CFT..VMUUR



JNS: CFT..VM TYPE

Stud diameter mm	Dimensions (mm)														Max tightening torque N·m	Basic dynamic load rating Cr N	Basic static load rating Cor N	Largest permissible load N	Track load capacity N	Limiting speed rpm	Designation				Weight g
	D	C	d	Thread										Cylindrical outer ring							Crowned outer ring				
				G	G ₁	B ₁	B ₂	B ₃	C ₁	S ₁	d ₂	r _{min}	f	Without seals							With seals	Without seals	With seals		
6	16	11	6	M6X1	8	28	16	—	0.6	¹⁾ M6X0.75	—	0.3	11	3	6960	8530	2110	3430 1080	12000	CFT 6VM	CFT 6VMUU	CFT 6VMR	CFT 6VMUUR	18.5	
	8	19	8	M8X1.25	10	32	20	—	0.6	¹⁾ M6X0.75	—	0.3	13	8	8130	11170	4710	4020 1370	9000	CFT 8VM	CFT 8VMUU	CFT 8VMR	CFT 8VMUUR	28.5	
10	22	12	10	M10X1.25 M10X1.0 ⁴⁾	12	36	23	—	0.6	¹⁾ M6X0.75	—	0.3	15	15	9510	14500	7450	4700 1670	7500	CFT10VM	CFT10VMUU	CFT10VMR	CFT10VMUUR	45	
	26	12	10	M10X1.25 M10X1.0 ⁴⁾	12	36	23	—	0.6	¹⁾ M6X0.75	—	0.3	15	15	9510	14500	7450	5490 2060	7500	CFT10-1VM	CFT10-1VMUU	CFT10-1VMR	CFT10-1VMUUR	60	
12	30	14	12	M12X1.5	13	40	25	6	0.6	M6X0.75	3	0.6	20	22	13430	19700	11270	7060 2450	6000	CFT12VM	CFT12VMUU	CFT12VMR	CFT12VMUUR	95	
	32	14	12	M12X1.5	13	40	25	6	0.6	M6X0.75	3	0.6	20	22	13430	19700	11270	7450 2740	6000	CFT12-1VM	CFT12-1VMUU	CFT12-1VMR	CFT12-1VMUUR	105	
16	35	18	16	M16X1.5	17	52	32.5	8	0.8	Rc1/8	3	0.6	24	58	20680	37630	19800	11200 3140	4500	CFT16VM	CFT16VMUU	CFT16VMR	CFT16VMUUR	170	
18	40	20	18	M18X1.5	19	58	36.5	8	0.8	Rc1/8	3	1	26	87	25280	51350	26560	14400 3720	3500	CFT18VM	CFT18VMUU	CFT18VMR	CFT18VMUUR	250	
20	52	24	20	M20X1.5	21	66	40.5	9	0.8	Rc1/8	4	1	36	120	33120	64480	32140	23200 8230	3500	CFT20VM	CFT20VMUU	CFT20VMR	CFT20VMUUR	480	
	47	24	20	M20X1.5	21	66	40.5	9	0.8	Rc1/8	4	1	36	120	33120	64480	32140	21000 7150	3500	CFT20-1VM	CFT20-1VMUU	CFT20-1VMR	CFT20-1VMUUR	385	
24	62	29	24	M24X1.5	25	80	49.5	11	0.8	Rc1/8	4	1	40	220	46550	92020	49500	34200 10500	3000	CFT24VM	CFT24VMUU	CFT24VMR	CFT24VMUUR	815	
	72	29	24	M24X1.5	25	80	49.5	11	0.8	Rc1/8	4	1	40	220	46550	92020	49500	39800 12900	3000	CFT24-1VM	CFT24VMUU	CFT24-1VMR	CFT24-1VMUUR	1140	
30	80	35	30	M30X1.5	32	100	63	15	1	Rc1/8	4	1	46	450	67620	144060	73700	52600 14900	2200	CFT30VM	CFT30VMUU	CFT30VMR	CFT30VMUUR	1870	
	85	35	30	M30X1.5	32	100	63	15	1	Rc1/8	4	1	46	450	67620	144060	73700	56000 16100	2200	CFT30-1VM	CFT30-1VMUU	CFT30-1VMR	CFT30-1VMUUR	2030	
	90	35	30	M30X1.5	32	100	63	15	1	Rc1/8	4	1	46	450	67620	144060	73700	59300 17300	2200	CFT30-2VM	CFT30-2VMUU	CFT30-2VMR	CFT30-2VMUUR	2220	

● Also hexagon socket with piping tap "CFT..VMA" type or "CFT..VMB" type available.
 ● Also solid eccentric with piping tap "CFHT..VM" type and "CFHT..VMA", "CFHT..VMB" type available.
 1) Smallest permissible chamfer dimension.
 2) Without seals, suitable for grease lubrication. In case of oil lubrication, up to 130% of this value shall be permissible, and 70% of this value shall apply for types with seals.
 3) The grease refilling hole is machined only for the head. 4) Add "K" to the code number end.